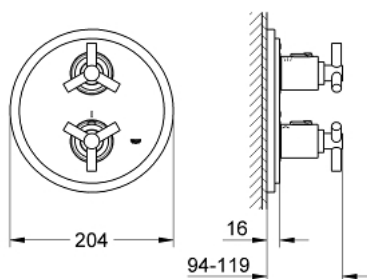


## 19 395 000 ATRIO THERMOSTAT WITH INTEGRATED 2-WAY DIVERTER FOR BATH OR SHOWER WITH MORE THAN ONE OUTLET

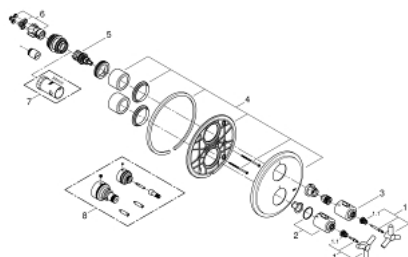


### PRODUCT DESCRIPTION

- Colour: chrome
- set for final installation for
- GROHE Rapido T 35 500 000
- without concealed body
- GROHE Long-Life finish
- GROHE SafeStop at 38°C
- Aquadimmer with multiple function
- shut off and flow control
- diverter for 2 outlets
- escutcheon- and shaft-sealing
- wall escutcheon
- covered fixing
- with Ypsilon handle



## 19 395 000 ATRIO THERMOSTAT WITH INTEGRATED 2-WAY DIVERTER FOR BATH OR SHOWER WITH MORE THAN ONE OUTLET



### SPARE PARTS, April 2014 – spareParts.validDate.now

1: Handle Atrio Ypsilon (Order-nr. 47289000)

1.1: Snap insert (Order-nr. 08943000)

2: Temperature scale handle (Order-nr. 06676000)

3: Handle for shut-off valve (Order-nr. 06654000)

4: Escutcheon (Order-nr. 47326000)

5: Aquadimmer (Order-nr. 47364000)

6: Adapter (Order-nr. 12701000)

7: Socket Spanner (Order-nr. 19332000)\*

8: Extension-set 27.5 mm (Order-nr. 47781000)\*

\* Optional accessories