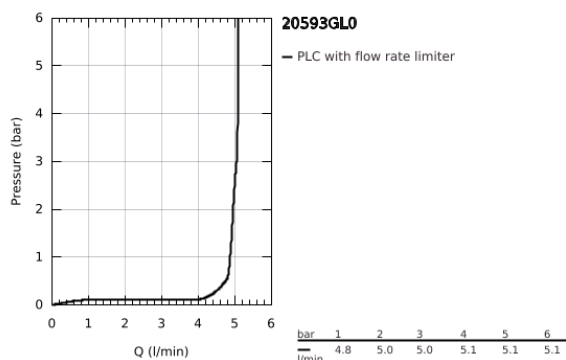
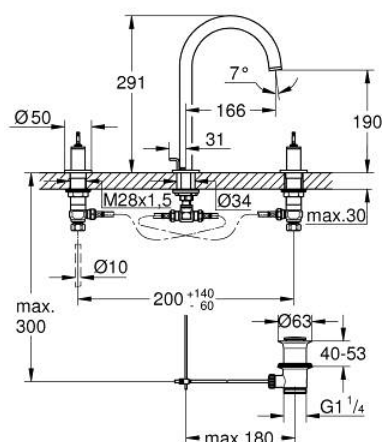


20 593 GL0 ATRIO PRIVATE COLLECTION THREE-HOLE BASIN MIXER 1/2" L-SIZE

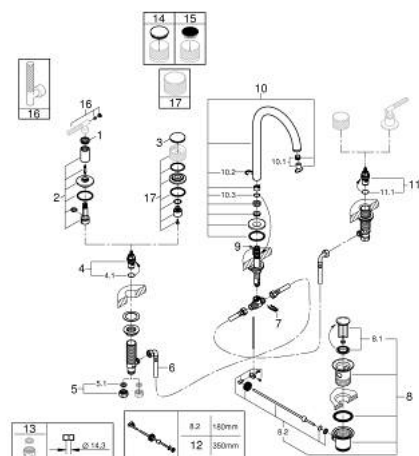


PRODUCT DESCRIPTION

- Colour: cool sunrise
- ceramic headparts 1/2", 90°
- GROHE Long-Life finish
- GROHE Water Saving - Less water, perfect flow
- maximum flow rate (at 3 bar): 5 l/min
- swivel tubular spout with mousseur and stop limiter
- adjustable swivel area 0° / 150° / 360°
- pop-up waste set 1 1/4"
- pressure-proof, flexible connection hoses between spout and side valves
- for stick handles
- to be combined with stick sets 48 458, 48 459 or 48 646, please order separately



20 593 GL0 ATRIO PRIVATE COLLECTION THREE-HOLE BASIN MIXER 1/2" L-SIZE



SPARE PARTS, May 2018 – now

- 1: Decorative ring (Spare part-nr. 101296GL00)
- 2: Escutcheon (Spare part-nr. 101297GL00)
- 3: Cap (Spare part-nr. 101300GL00)
- 4: Ceramic headpart, 1/2" (Spare part-nr. 45882000)
- 4.1: O-ring Ø 18.2 x Ø 1.7 (Spare part-nr. 0392400M)
- 5: Coupling nut 1/2" (Spare part-nr. 1290100M)
- 5.1: Fibre seal dia. Ø 18,5 x Ø 12 x 2 (Spare part-nr. 0138900M)
- 6: Flexible connection hose (Spare part-nr. 45704000)
- 7: Fixing clamp (Spare part-nr. 6554100M)
- 8: Waste set 1 1/4" (Spare part-nr. 28910GL0)
- 8.1: Plug (Spare part-nr. 07182GL0)
- 8.2: Eccentric rod (Spare part-nr. 07052000)
- 9: Pop-up rod (Spare part-nr. 65196GL0)
- 10: Spout (Spare part-nr. 101298GL00)
- 10.1: Flow straightener (Spare part-nr. 48408000)
- 10.2: Safety ring (Spare part-nr. 4826600M)
- 10.3: Sealing washer (Spare part-nr. 0128500M)
- 11: Ceramic headpart, 1/2" (Spare part-nr. 45883000)
- 11.1: O-ring Ø 18.2 x Ø 1.7 (Spare part-nr. 0392400M)
- 12: Eccentric rod (Spare part-nr. 07341000)*
- 13: Coupling nut 1/2" x 14.5 mm (Spare part-nr. 1290200M)*
- 14: Inlays made from White Attica Caesarstone material (Spare part-nr. 484600)*
- 15: Inlays made from Vanilla Noir Caesarstone material (Spare part-nr. 484610)*
- 16: Knurled sticks (Spare part-nr. 48646GL0)*
- 17: Handle (Spare part-nr. 101299GL00)*

* Optional accessories