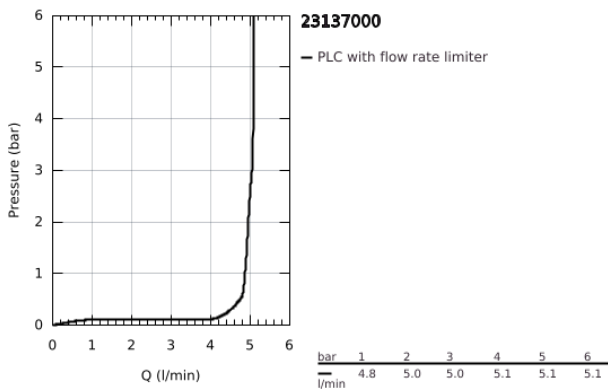
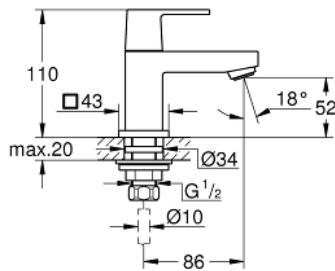


23 137 000 **EUROCUBE PILLAR TAP
XS-SIZE**

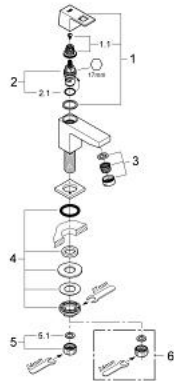


PRODUCT DESCRIPTION

- Colour: chrome
- single hole installation
- metal lever
- ceramic headpart 1/2", 90°
- GROHE LongLife finish
- GROHE EcoJoy - less water, perfect flow
- maximum flow rate (at 3 bar): 5 l/min
- SpeedClean mousseur
- union nut 1/2" x 10.5 mm



23 137 000 EUROCUBE PILLAR TAP XS-SIZE



SPARE PARTS, September 2011 – now

- 1: Eurocube lever (Spare part-nr. 48127000)
 - 1.10: Replacement handle connection kit (Spare part-nr. 45186000)
 - 1.10.1: O-ring \varnothing 18.2 x \varnothing 1.7 (Spare part-nr. 0392400M)
 - 2: Ceramic headpart, 1/2" (Spare part-nr. 45882000)
 - 2.1: O-ring \varnothing 18.2 x \varnothing 1.7 (Spare part-nr. 0392400M)
 - 3: Flow straightener (Spare part-nr. 13955000)
 - 4: Shank fastening assembly 1/2" (Spare part-nr. 45000000)
 - 5: Coupling nut 1/2" (Spare part-nr. 1290100M)
 - 5.1: Fibre seal dia. \varnothing 18,5 x \varnothing 12 x 2 (Spare part-nr. 0138900M)
 - 6: Coupling nut 1/2" x 14.5 mm (Spare part-nr. 1290200M)*
- * Optional accessories