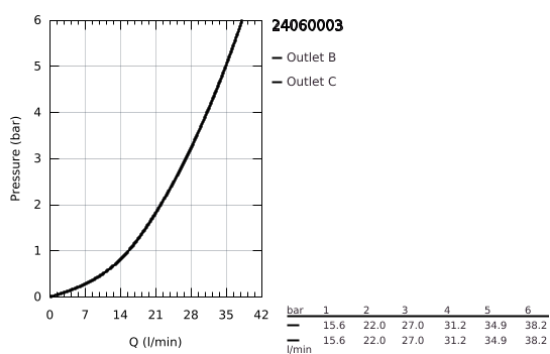
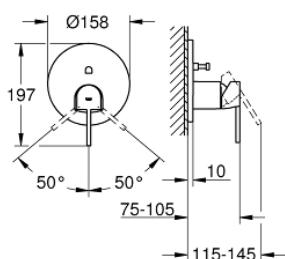


24 060 003 GROHE PLUS SINGLE-LEVER MIXER WITH 2-WAY DIVERTER

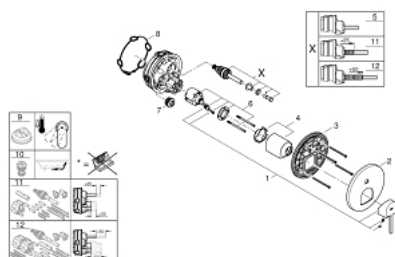


PRODUCT DESCRIPTION

- Colour: chrome
- set for final installation for
- GROHE Rapido SmartBox (35 600/35 604)
- GROHE SilkMove 46 mm ceramic cartridge
- GROHE Long-Life finish
- wall escutcheon with GROHE FastFixation (covered escutcheon- and shaft sealing, covered fixing)
- metal escutcheon, retroactively 6° adjustable
- metal lever
- automatic 2-way diverter
- flow performance: outlet B = 27 l/min, outlet C = 27 l/min
- without roughing-in-set



24 060 003 **GROHE PLUS SINGLE-LEVER MIXER WITH 2-WAY DIVERTER**



SPARE PARTS, August 2018 – now

- 1: lever (Spare part-nr. 48496000)
- 2: escutcheon (Spare part-nr. 49118000)
- 3: Mounting plate (Spare part-nr. 48438000)
- 4: cap (Spare part-nr. 48495000)
- 5: Diverter (Spare part-nr. 48442000)
- 6: Cartridge (Spare part-nr. 46048000)
- 7: Non-return valve (Spare part-nr. 49085000)
- 8: Seal (Spare part-nr. 48360000)
- 9: Temperature limiter (Spare part-nr. 46375000)*
- 10: Backflow protection combination (EN1717) (Spare part-nr. 14055000)*
- 11: Universal extension set single-lever mixers, 25 mm (Spare part-nr. 1405600)*
- 12: Universal extension set single-lever mixers, 50 mm (Spare part-nr. 1405700)*

* Optional accessories