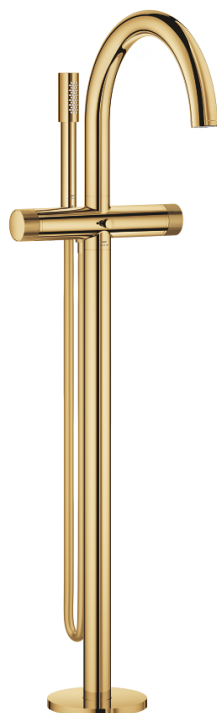
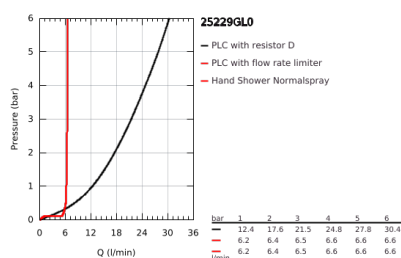
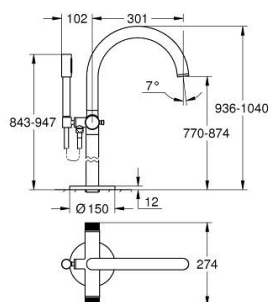


## 25 229 GL0 ATRIO PRIVATE COLLECTION BATH MIXER 1/2"

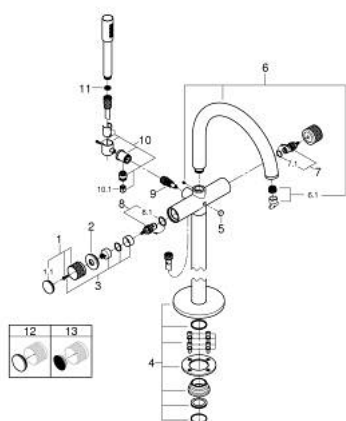


### PRODUCT DESCRIPTION

- Colour: cool sunrise
- floor-mounted installation with high pillar unions (765 mm)
- set for final installation for
- 45 984 001
- ceramic headparts 1/2", 90°
- GROHE Long-Life finish
- automatic diverter: bath/shower
- projection 301 mm
- integrated non-return valve in the shower outlet 1/2"
- hand shower with holder
- Silverflex shower hose 1250 mm (28 362)
- protected against backflow
- knobs with inlay, can be combined with 48 460 000 or 48 461 000
- without roughing-in set 45 984 (please order separately)



## 25 229 GL0 ATRIO PRIVATE COLLECTION BATH MIXER 1/2"



### SPARE PARTS, May 2018 – now

- 1: Handle (Spare part-nr. 101342GL00)
- 1.1: Cap (Spare part-nr. 101308GL00)
- 2: Decorative ring (Spare part-nr. 101309GL00)
- 3: Handle adaptor (Spare part-nr. 1012789990)
- 4: Mounting set (Spare part-nr. 101341GL00)
- 5: Diverter knob (Spare part-nr. 64989GL0)
- 6: Spout (Spare part-nr. 101320GL00)
- 6.1: Mousseur (Spare part-nr. 13926000)
- 7: Ceramic headpart, 1/2" (Spare part-nr. 45882000)
- 7.1: O-ring Ø 18.2 x Ø 1.7 (Spare part-nr. 0392400M)
- 8: Ceramic headpart, 1/2" (Spare part-nr. 45883000)
- 8.1: O-ring Ø 18.2 x Ø 1.7 (Spare part-nr. 0392400M)
- 9: Diverter (Spare part-nr. 48407GL0)
- 10: Hand shower holder (Spare part-nr. 101321GL00)
- 10.1: Non-return valve (Spare part-nr. 08565000)
- 11: Dirt strainer (Spare part-nr. 0700200M)
- 12: Inlays made from White Attica Caesarstone material (Spare part-nr. 48460000)\*
- 13: Inlays made from Vanilla Noir Caesarstone material (Spare part-nr. 48461000)\*

\* Optional accessories