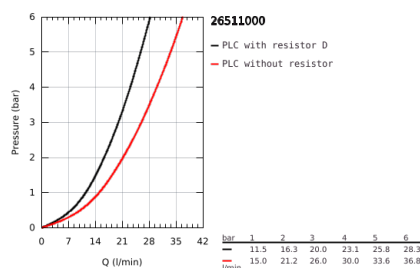
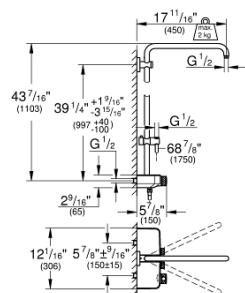


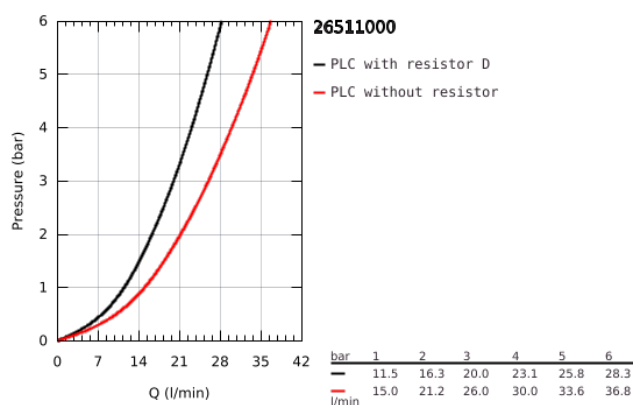
26 511 000 EUPHORIA SMARTCONTROL SYSTEM MONO SHOWER SYSTEM WITH THERMOSTAT FOR WALL MOUNTING



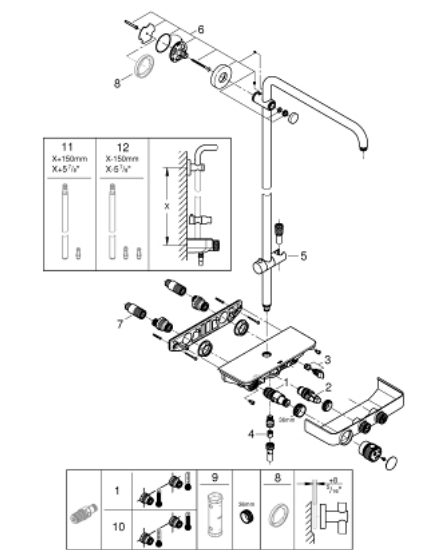
PRODUCT DESCRIPTION

- Colour: chrome
- consisting of:
 - horizontal 450 mm shower arm*
 - upper bracket adjustable for minimal adaption to existing drilling holes
 - exposed SmartControl thermostat
 - allows change between:
 - head shower and hand shower (to be ordered separately)**
 - with ball joint
 - rotation angle $\pm 15^\circ$
 - adjustable in height with gliding element
- Rotaflex Metal Long-Life TwistStop shower hose 1750 mm (28 025)
- GROHE DreamSpray perfect spray pattern
- GROHE Long-Life finish
- GROHE CoolTouch no risk of scalding
- GROHE TurboStat compact cartridge with wax thermoelement
- GROHE ProGrip with knurl structure
- GROHE Water Saving - Less water, perfect flow
- - GROHE SafeStop at 38°C
- GROHE SafeStop Plus optional temperature limiter at 43°C included
- GROHE SmartControl push for ON-OFF, turn for volume adjustment from GROHE Water Saving to full flow
- integrated GROHE EasyReach shower tray
- SpeedClean anti-lime system
- Inner WaterGuide for a longer life
- TwistStop to prevent hose from twisting
- suitable for instantaneous heaters from 18 kW/h
- minimum flow rate 7 l/min.
- * weight of head shower up to 2 kg acceptable
- ** recommendation: Euphoria 260 SmartControl 1.8 gpm (26 456), Euphoria Massage 1.8 gpm (26 513 000)

26 511 000 EUPHORIA SMARTCONTROL SYSTEM MONO SHOWER SYSTEM WITH THERMOSTAT FOR WALL MOUNTING



26 511 000 EUPHORIA SMARTCONTROL SYSTEM MONO SHOWER SYSTEM WITH THERMOSTAT FOR WALL MOUNTING



SPARE PARTS, February 2019 – March 2021

- 1: Thermostatic compact cartridge 1/2" (Order-nr. 49110000)
 - 2: Cartridge (Order-nr. 48297000)
 - 3: Non-return valve (Order-nr. 49069000)
 - 4: Non-return valve (Order-nr. 08565000)
 - 5: Glide element (Order-nr. 48177000)
 - 6: Shower bar holder (Order-nr. 48279000)
 - 7: Compensation disc (Order-nr. 27180000)*
 - 8: Socket Spanner (Order-nr. 49059000)*
 - 9: GROHE TurboStat cartridge 1/2" (Order-nr. 47175000)*
 - 10: Shower system pipe for retrofitting (Order-nr. 48499000)*
 - 11: Shower system pipe for retrofitting (Order-nr. 48498000)*
- * Optional accessories