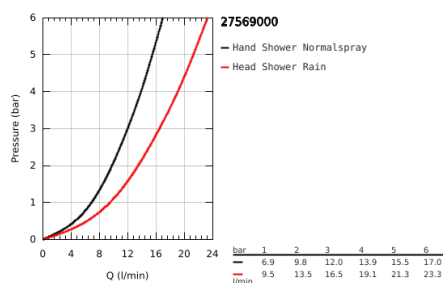
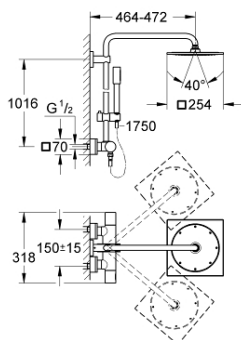


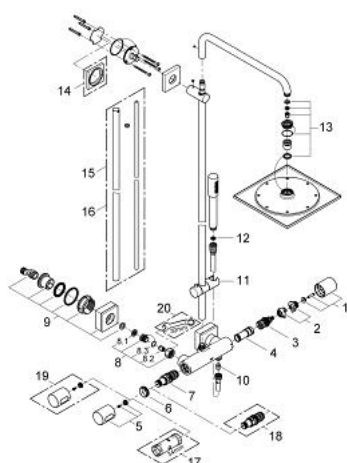
## 27 569 000 RAINSHOWER F-SERIES SYSTEM 10" SHOWER SYSTEM WITH THERMOSTAT FOR WALL MOUNTING



### PRODUCT DESCRIPTION

- Colour: chrome
- consisting of:
  - horizontal swivable 450 mm shower arm
  - exposed thermostat with Aquadimmer function
  - allows change between:
    - head shower Rainshower F-Series 10" (27 271)
  - material: metal
  - with ball joint
  - rotation angle  $\pm 20^\circ$
  - hand shower Sena Stick (28 034 000)
  - adjustable in height with gliding element (12 140 000)
  - GROHE TurboStat compact cartridge with wax thermoelement
  - GROHE SafeStop at  $38^\circ\text{C}$
  - GROHE SafeStop Plus optional temperature limiter at  $43^\circ\text{C}$  included
  - metal shower hose 1750 mm (28 025)
  - GROHE CoolTouch
  - GROHE DreamSpray perfect spray pattern
  - GROHE Long-Life finish
  - Inner WaterGuide for a longer life
  - suitable for instantaneous heaters from 18 kW/h
  - minimum flow rate 7 l/min.

## 27 569 000 RAINSHOWER F-SERIES SYSTEM 10" SHOWER SYSTEM WITH THERMOSTAT FOR WALL MOUNTING



### SPARE PARTS, April 2013 – spareParts.validDate.now

- 1: Aquadimmer handle (Order-nr. 47804000)
- 2: Stop (Order-nr. 47723000)
- 3: Aquadimmer (Order-nr. 47364000)
- 4: Water flow (Order-nr. 47887000)
- 5: Handle (Order-nr. 47803000)
- 6: Fitting ring (Order-nr. 47743000)
- 7: Thermostatic compact cartridge 1/2" (Order-nr. 47439000)
- 8: Non-return valve (Order-nr. 47189000)
- 8.1: Dirt Strainer (Order-nr. 0726400M)
- 8.2: Non-return valve (Order-nr. 08565000)
- 8.3: O-ring  $\varnothing 17 \times \varnothing 2$  (Order-nr. 0305500M)
- 9: S-union (Order-nr. 47824000)
- 10: Non-return valve (Order-nr. 08565000)
- 11: Glide element (Order-nr. 12140000)
- 12: Dirt strainer (Order-nr. 0700200M)
- 13: Spare part set (Order-nr. 45933000)
- 14: Compensation disc (Order-nr. 27617000)\*
- 15: Shower system pipe for retrofitting (Order-nr. 48053000)\*
- 16: Shower system pipe for retrofitting (Order-nr. 48054000)\*
- 17: Socket Spanner (Order-nr. 19332000)\*
- 18: Thermo-element 1/2" for changed waterways (Order-nr. 47175000)\*
- 19: Temperature scale handle (Order-nr. 47811000)\*
- 20: Special spanner (Order-nr. 19377000)\*

\* Optional accessories