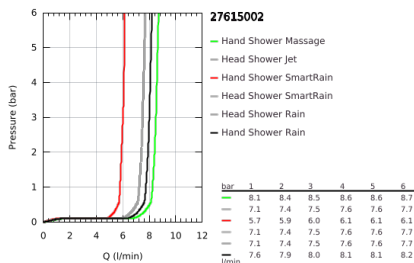
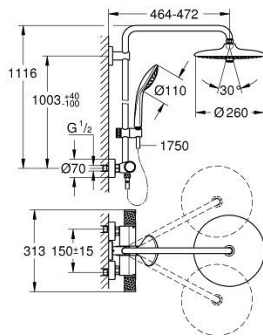


27 615 002 EUPHORIA SYSTEM 260 SHOWER SYSTEM WITH THERMOSTATIC MIXER FOR WALL MOUNTING



PRODUCT DESCRIPTION (1/2)

- Colour: chrome
- consisting of:
 - horizontal swivable 450 mm shower arm
 - exposed thermostat with Aquadimmer function
 - allows change between:
 - head shower Euphoria 260 (26 457)
 - spray patterns: Rain, SmartRain, Jet
 - maximum flow rate (at 3 bar): 7.5 l/min
 - with ball joint
 - rotation angle $\pm 15^\circ$
 - hand shower Euphoria 110 Massage (27 239 000)
 - spray patterns: Rain, Massage, SmartRain
 - maximum flow rate (at 3 bar): 8.5 l/min
 - adjustable in height with gliding element
 - shower hose Silverflex 1750 mm 1/2" x 1/2" (28 388)
 - maximum flow rate system (at 3 bar): 8.5 l/min
 - GROHE EcoJoy - less water, perfect flow
 - GROHE TurboStat - compact cartridge with wax thermoelement
 - GROHE SafeStop - safety button at 38°C
 - GROHE SafeStop Plus - optional temperature limiter at 43°C included
 - GROHE CoolTouch - no risk of scalding
 - GROHE ProGrip - with knurl structure
 - GROHE DreamSpray - perfect spray pattern
 - GROHE LongLife finish
 - GROHE SprayDimmer - stepless flow rate adjustment
 - Flexible Installation - 1 adjustable bracket for existing drill holes
 - Inner WaterGuide - inner insulation for surface protection
 - GROHE SpeedClean - effortless limescale removal
 - TwistStop - to prevent hose from twisting
 - suitable for instantaneous heaters from 18 kW/h
 - minimum flow rate 5 l/min.
 - optional upgrade: GROHE EasyReach tray (26 362), sold separately
 - professional edition

Pure Freude
an Wasser

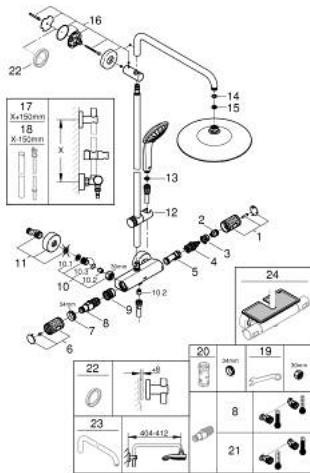


27 615 002 EUPHORIA SYSTEM 260 SHOWER SYSTEM WITH THERMOSTATIC MIXER FOR WALL MOUNTING

PRODUCT DESCRIPTION (2/2)

- maximum flow rate (at 3 bar): 7.5 l/min

27 615 002 EUPHORIA SYSTEM 260 SHOWER SYSTEM WITH THERMOSTATIC MIXER FOR WALL MOUNTING



SPARE PARTS, January 2020 – now

- 1: Shut-off handle (Spare part-nr. 49162000)
- 2: Stop ring (Spare part-nr. 47986000)
- 3: Stop ring (Spare part-nr. 47965000)
- 4: Aquadimmer (Spare part-nr. 47364000)
- 5: Water flow (Spare part-nr. 47887000)
- 6: Shut-off handle (Spare part-nr. 49160000)
- 7: Fitting ring (Spare part-nr. 47743000)
- 8: Thermostatic compact cartridge 1/2" (Spare part-nr. 47439000)
- 9: Race (Spare part-nr. 47975000)
- 10: Non-return valve (Spare part-nr. 47189000)
- 10.1: Dirt Strainer (Spare part-nr. 0726400M)
- 10.2: Non-return valve (Spare part-nr. 08565000)
- 10.3: O-ring $\varnothing 17 \times \varnothing 2$ (Spare part-nr. 0305500M)
- 11: S-union (Spare part-nr. 12662000)
- 12: Glide element (Spare part-nr. 48424000)
- 13: Dirt strainer (Spare part-nr. 0700200M)
- 14: Fibre seal dia. $\varnothing 18,5 \times \varnothing 12 \times 2$ (Spare part-nr. 0138900M)
- 15: Dirt strainer (Spare part-nr. 48007000)
- 16: Shower bar holder (Spare part-nr. 48279000)
- 17: Shower system pipe for retrofitting (Spare part-nr. 48514000)*
- 18: Shower system pipe for retrofitting (Spare part-nr. 48515000)*
- 19: Special spanner (Spare part-nr. 19377000)*
- 20: Socket Spanner (Spare part-nr. 19332000)*
- 21: GROHE TurboStat cartridge 1/2" (Spare part-nr. 47175000)*
- 22: Compensation disc (Spare part-nr. 27180000)*
- 23: Shower arm for shower systems (Spare part-nr. 14047000)*
- 24: GROHE EasyReach tray (Spare part-nr. 26362LN1)*

* Optional accessories