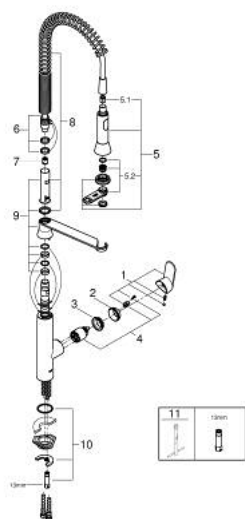


32 951 000 **K7 SINGLE-LEVER SINK MIXER 1/2"**

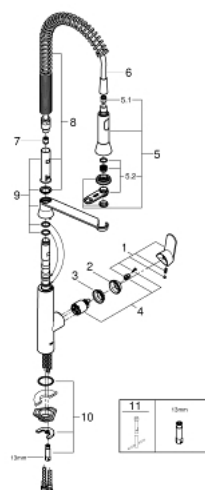


SPARE PARTS, April 2017 – now

- 1: Lever (Spare part-nr. 46729000)
- 2: Cap (Spare part-nr. 46116000)
- 3: Screw coupling (Spare part-nr. 46460000)
- 4: Cartridge (Spare part-nr. 46374000)
- 5: Pull out spray (Spare part-nr. 46731000)
- 5.1: Non-return valve (Spare part-nr. 08565000)
- 5.2: Mousseur (Spare part-nr. 46711000)
- 6: Shower hose (Spare part-nr. 46732000)
- 7: Non-return valve (Spare part-nr. 48224000)
- 8: Spring (Spare part-nr. 46733SD0)
- 9: Holder pull out spray (Spare part-nr. 46734000)
- 10: Shank fastening assembly (Spare part-nr. 46671000)
- 11: Mounting wrench (Spare part-nr. 19017000)*

* Optional accessories

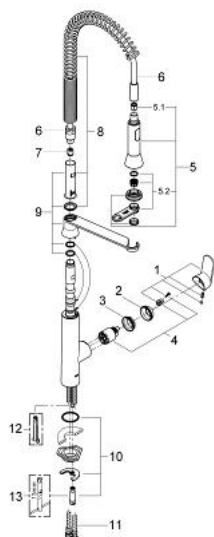
32 951 000 **K7 SINGLE-LEVER SINK MIXER 1/2"**



SPARE PARTS, August 2016 – April 2017

- 1: Lever (Spare part-nr. 46729000)
 - 2: Cap (Spare part-nr. 46116000)
 - 3: Screw coupling (Spare part-nr. 46460000)
 - 4: Cartridge (Spare part-nr. 46374000)
 - 5: Pull out spray (Spare part-nr. 46731000)
 - 5.1: Non-return valve (Spare part-nr. 08565000)
 - 5.2: Mousseur (Spare part-nr. 46711000)
 - 6: Shower hose (Spare part-nr. 46732000)
 - 7: Non-return valve (Spare part-nr. 48224000)
 - 8: Spring (Spare part-nr. 46733SD0)
 - 9: Holder pull out spray (Spare part-nr. 46734000)
 - 10: Shank fastening assembly (Spare part-nr. 46671000)
 - 11: Socket Spanner (Spare part-nr. 19332000)*
 - 12: Mounting wrench (Spare part-nr. 19017000)*
- * Optional accessories

32 951 000 **K7 SINGLE-LEVER SINK MIXER 1/2"**

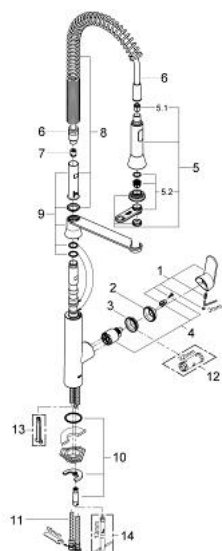


SPARE PARTS, March 2013 – August 2016

- 1: Lever (Spare part-nr. 46729000)
- 2: Cap (Spare part-nr. 46116000)
- 3: Screw coupling (Spare part-nr. 46460000)
- 4: Cartridge (Spare part-nr. 46374000)
- 5: Pull out spray (Spare part-nr. 46731000)
- 5.1: Non-return valve (Spare part-nr. 08565000)
- 5.2: Mousseur (Spare part-nr. 46711000)
- 6: Shower hose (Spare part-nr. 46732000)
- 7: Non-return valve (Spare part-nr. 48224000)
- 8: Spring (Spare part-nr. 46733SD0)
- 9: Holder pull out spray (Spare part-nr. 46734000)
- 10: Shank fastening assembly (Spare part-nr. 46671000)
- 11: Tube (Spare part-nr. 46413000)
- 12: Disassembling key (Spare part-nr. 19132000)*
- 13: Mounting wrench (Spare part-nr. 19017000)*

* Optional accessories

32 951 000 **K7 SINGLE-LEVER SINK MIXER 1/2"**



SPARE PARTS, November 2009 – March 2013

- 1: Lever (Spare part-nr. 46729000)
- 2: Cap (Spare part-nr. 46116000)
- 3: Ring (Spare part-nr. 04456000)
- 4: Cartridge (Spare part-nr. 46374000)
- 5: Pull out spray (Spare part-nr. 46731000)
- 5.1: Non-return valve (Spare part-nr. 08565000)
- 5.2: Mousseur (Spare part-nr. 46711000)
- 6: Shower hose (Spare part-nr. 46732000)
- 7: Non-return valve (Spare part-nr. 08567000)
- 8: Spring (Spare part-nr. 46733SD0)
- 9: Holder pull out spray (Spare part-nr. 46734000)
- 10: Shank fastening assembly (Spare part-nr. 46671000)
- 11: Tube (Spare part-nr. 46413000)
- 12: Socket Spanner (Spare part-nr. 19332000)*
- 13: Disassembling key (Spare part-nr. 19132000)*
- 14: Mounting wrench (Spare part-nr. 19017000)*

* Optional accessories