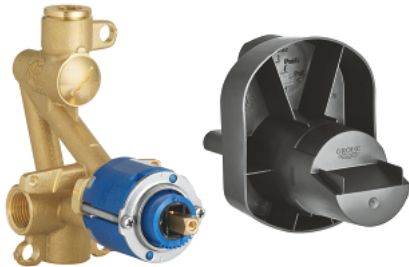
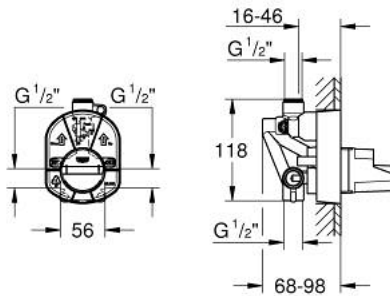


33 965 000 **SINGLE-LEVER MIXER 1/2", CONCEALED BODY**



PRODUCT DESCRIPTION

- for bath and shower
- without finishing trim set
- wall installation
- GROHE SilkMove 46 mm ceramic cartridge
- adjustable flow rate limiter
- top and bottom outlet 1/2"
- diverter in set for final installation
- clockwise thread
- fastening loops



33 965 000 **SINGLE-LEVER MIXER 1/2", CONCEALED BODY**

SPARE PARTS, January 1998 – now

1: Cartridge (Spare part-nr. 46048000)

