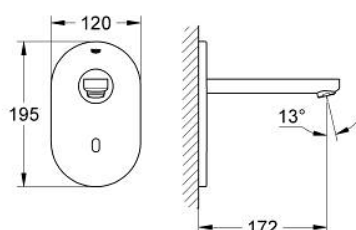
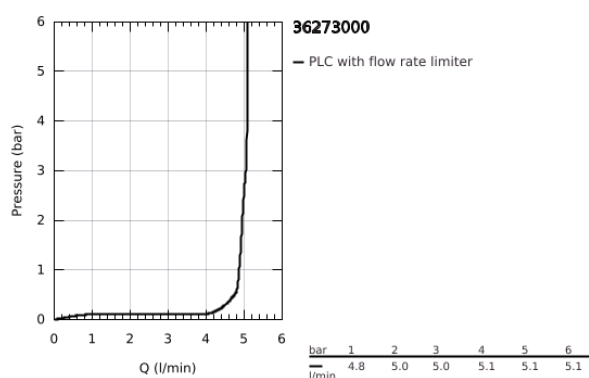


## 36 273 000 EUROECO COSMOPOLITAN E INFRA-RED ELECTRONIC WALL BASIN TAP WITHOUT MIXING DEVICE

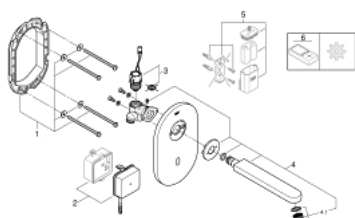


### PRODUCT DESCRIPTION

- Colour: chrome
- with infrared sensor for bi-directional communication for monitoring, configuration and service purpose
- for cold or premixed water
- with transformer 100-230 V AC, 50-60 Hz, 6 V DC
- maximum flow rate (at 3 bar): 5 l/min
- chrome escutcheon
- chrome spout
- projection 172 mm
- 7 pre-set programs:
  - auto flush
  - thermal disinfection
  - cleaning mode
- additional functions and precise settings by remote control 36 407
- set for final installation for concealed fitting box
- 36 336 001/36 337 001
- CE approved
- acoustic group I in accordance with DIN 4109
- min. recommended pressure 1.0 bar



## 36 273 000 EUROECO COSMOPOLITAN E INFRA-RED ELECTRONIC WALL BASIN TAP WITHOUT MIXING DEVICE



### SPARE PARTS, May 2018 – now

- 1: Mounting frame (Spare part-nr. 42419000)
- 2: switching power supply (Spare part-nr. 42470000)
- 3: Solenoid valve (Spare part-nr. 42469000)
- 4: Spout (Spare part-nr. 42445000)
- 4.1: Mousseur (Spare part-nr. 48159000)
- 5: Battery housing (Spare part-nr. 42393000)\*
- 6: Remote control (Spare part-nr. 36407001)\*

\* Optional accessories