

37 095 000 FILLING VALVE

No exploded view is available for this spare part list.

SPARE PARTS, March 2021 – now

- 1: Lever (Spare part-nr. 43734000)
- 1.1: Seal (Spare part-nr. 4377000M)
- 2: Valve head (Spare part-nr. 43536000)
- 3: Membrane (Spare part-nr. 4375800M)
- 4: Screw cap (Spare part-nr. 43735000)
- 5: Valve FLOAT, 5 pcs. (Spare part-nr. 4379100M)
- 6: Set of seals (Spare part-nr. 43722000)*

* Optional accessories

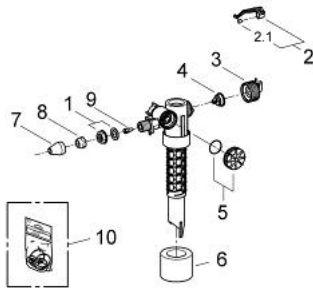
37 095 000 FILLING VALVE

No exploded view is available for this spare part list.

SPARE PARTS, June 2012 – March 2021

- 1: Lever (Spare part-nr. 43734000)
 - 1.1: Seal (Spare part-nr. 4377000M)
 - 2: Valve head (Spare part-nr. 43536000)
 - 3: Membrane (Spare part-nr. 4375800M)
 - 4: Screw cap (Spare part-nr. 43735000)
 - 5: Valve FLOAT, 5 pcs. (Spare part-nr. 4379100M)
 - 6: Dummy plug and escutcheon cap (Spare part-nr. 37125000)
 - 7: Compression nut (Spare part-nr. 43258000)
 - 8: Throttle (Spare part-nr. 42356000)
 - 9: Set of seals (Spare part-nr. 43722000)*
- * Optional accessories

37 095 000 FILLING VALVE



SPARE PARTS, January 1995 – June 2012

- 1: Inlet adaptor (Spare part-nr. 43262000)
- 2: Lever (Spare part-nr. 43734000)
- 2.1: Seal (Spare part-nr. 4377000M)
- 3: Valve head (Spare part-nr. 43536000)
- 4: Membrane (Spare part-nr. 4375800M)
- 5: Screw cap (Spare part-nr. 43735000)
- 6: Valve FLOAT, 5 pcs. (Spare part-nr. 4379100M)
- 7: Dummy plug and escutcheon cap (Spare part-nr. 37125000)
- 8: Compression nut (Spare part-nr. 43258000)
- 9: Throttle (Spare part-nr. 42356000)
- 10: Set of seals (Spare part-nr. 43722000)*

* Optional accessories