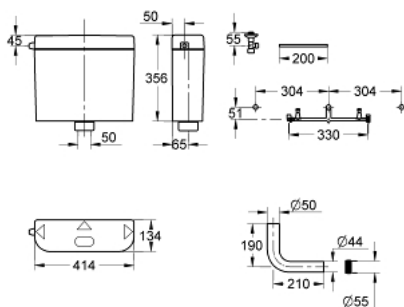


37 406 SH0 **START FLUSHING CISTERN FOR WC**



PRODUCT DESCRIPTION

- Colour: alpine white
- 6 - 9 l adjustable
- exposed installation
- interruptible flush cycle
- hidden flush pipe connection
- servo actuation
- low level
- made of PS
- low noise (group I acc. to German Noise Specification)
- fully insulated against condensation
- angle valve ½"
- copper pipe
- mounting template
- flush pipe bend
- WC inlet connector



37 406 SH0 **START FLUSHING CISTERN FOR WC**



SPARE PARTS, July 2011 – now

1: Filling valve (Spare part-nr. 37095000)

1.1: Lever (Spare part-nr. 43734000)

1.1.1: Seal (Spare part-nr. 4377000M)

1.2: Valve head (Spare part-nr. 43536000)

1.3: Membrane (Spare part-nr. 4375800M)

1.4: Screw cap (Spare part-nr. 43735000)

1.5: Valve FLOAT, 5 pcs. (Spare part-nr. 4379100M)

1.6: Set of seals (Spare part-nr. 43722000)*

2: Servo discharge valve (Spare part-nr. 43486000)

2.1: Outlet piston (Spare part-nr. 43544000)

2.1.1: Seal (Spare part-nr. 43808000)

3: Mounting set (Spare part-nr. 43259SH0)

4: Connector (Spare part-nr. 37119000)

5: EGAPLUS service valve 1/2" (Spare part-nr. 41263000)

6: Mounting template (Spare part-nr. 43514000)

* Optional accessories