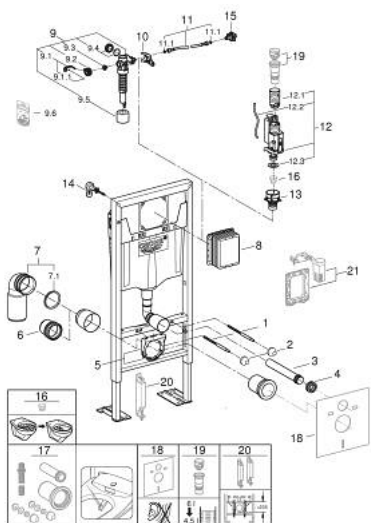


38 340 001 **RAPID SL ELEMENT FOR WC, 1.13 M INSTALLATION HEIGHT**

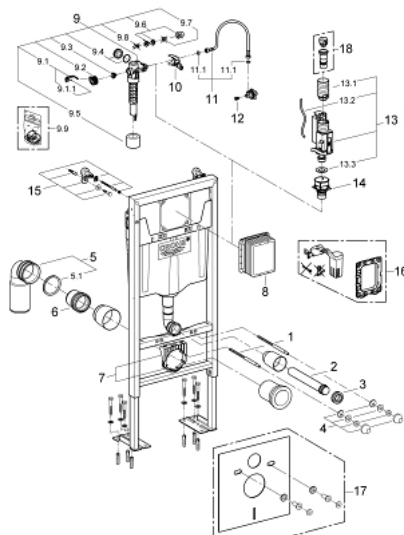


SPARE PARTS, November 2021 – now

- 1: Threaded bolt (Spare part-nr. 4276400M)
- 2: Basin fastening (Spare part-nr. 43511SH0)
- 3: Wall union (Spare part-nr. 43352000)
- 4: Connector (Spare part-nr. 37119000)
- 5: Support for outlet bend (Spare part-nr. 42243000)
- 6: Distance pipe 3" (Spare part-nr. 42766000)
- 7: PVC waste bend (Spare part-nr. 42216000)
- 7.1: Sealing washer (Spare part-nr. 4207700M)
- 8: Inspection shaft (Spare part-nr. 66791000)
- 9: Filling valve (Spare part-nr. 37095000)
- 9.1: Lever (Spare part-nr. 43734000)
- 9.1.1: Seal (Spare part-nr. 4377000M)
- 9.2: Valve head (Spare part-nr. 43536000)
- 9.3: Membrane (Spare part-nr. 4375800M)
- 9.4: Screw cap (Spare part-nr. 43735000)
- 9.5: Valve FLOAT, 5 pcs. (Spare part-nr. 4379100M)
- 9.6: Set of seals (Spare part-nr. 43722000)*
- 10: Support device (Spare part-nr. 42246000)
- 11: Tube (Spare part-nr. 42233000)
- 11.1: Sealing washer (Spare part-nr. 0319100M)
- 12: Dual Flush discharge valve AV1 (Spare part-nr. 42320000)
- 12.1: extension for Overflow pipe (Spare part-nr. 42313000)
- 12.2: Pneumatic hose (Spare part-nr. 42319000)
- 12.3: Seal (Spare part-nr. 42310000)
- 13: Valve seat (Spare part-nr. 42599000)
- 14: Wall brackets (Spare part-nr. 3855800M)
- 15: Water connection (Spare part-nr. 48561000)
- 16: Flow restrictor (Spare part-nr. 42300000)*
- 17: Retrofit kit for shower toilets Sensia Arena and IGS (Spare part-nr. 40899000)*
- 18: Set for noise protection (Spare part-nr. 37131000)*
- 19: 4.5 l adapter for GD2 (Spare part-nr. 42333000)*
- 20: Accessory (Spare part-nr. 38779000)*
- 21: Retro-fit set (Spare part-nr. 38796000)*

* Optional accessories

38 340 001 **RAPID SL ELEMENT FOR WC, 1.13 M INSTALLATION HEIGHT**

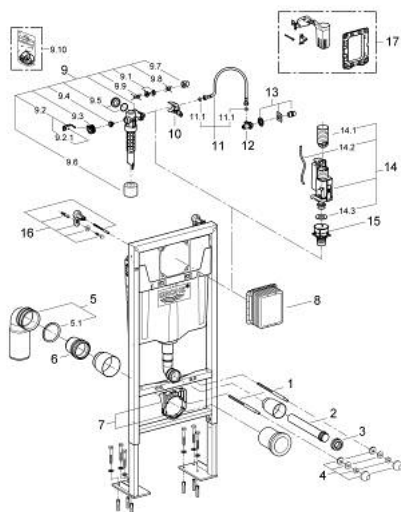


SPARE PARTS, February 2012 – November 2021

- 1: Threaded bolt (Spare part-nr. 4276400M)
- 2: Wall union (Spare part-nr. 43352000)
- 3: Connector (Spare part-nr. 37119000)
- 4: Basin fastening (Spare part-nr. 43511SH0)
- 5: Outlet elbow (Spare part-nr. 42216000)
- 5.1: Sealing washer (Spare part-nr. 4207700M)
- 6: Distance pipe 3" (Spare part-nr. 42766000)
- 7: Support for outlet bend (Spare part-nr. 42243000)
- 8: Inspection shaft (Spare part-nr. 66791000)
- 9: Filling valve (Spare part-nr. 37095000)
- 9.1: Lever (Spare part-nr. 43734000)
- 9.1.1: Seal (Spare part-nr. 4377000M)
- 9.2: Valve head (Spare part-nr. 43536000)
- 9.3: Membrane (Spare part-nr. 4375800M)
- 9.4: Screw cap (Spare part-nr. 43735000)
- 9.5: Valve FLOAT, 5 pcs. (Spare part-nr. 4379100M)
- 9.6: Set of seals (Spare part-nr. 43722000)*
- 10: Support device (Spare part-nr. 42246000)
- 11: Tube (Spare part-nr. 42233000)
- 11.1: Sealing washer (Spare part-nr. 0319100M)
- 12: Headpart (Spare part-nr. 42385000)
- 13: AV1 complete with pipe extension (Spare part-nr. 42320000)
- 13.1: extension for Overflow pipe (Spare part-nr. 42313000)
- 13.2: Pneumatic hose (Spare part-nr. 42319000)
- 13.3: Seal (Spare part-nr. 42310000)
- 14: Valve seat for GD2 (Spare part-nr. 42315000)
- 15: Wall brackets (Spare part-nr. 3855800M)
- 16: Retro-fit set (Spare part-nr. 38796000)*
- 17: Set for noise protection (Spare part-nr. 37131000)*
- 18: 4.5 l adapter for GD2 (Spare part-nr. 42333000)*

* Optional accessories

38 340 001 **RAPID SL ELEMENT FOR WC, 1.13 M INSTALLATION HEIGHT**



SPARE PARTS, August 2008 – February 2012

- 1: Threaded bolt (Spare part-nr. 4276400M)
- 2: Wall union (Spare part-nr. 43352000)
- 3: Connector (Spare part-nr. 37119000)
- 4: Basin fastening (Spare part-nr. 43511SH0)
- 5: Outlet elbow (Spare part-nr. 42216000)
- 5.1: Sealing washer (Spare part-nr. 4207700M)
- 6: Distance pipe 3" (Spare part-nr. 42766000)
- 7: Support for outlet bend (Spare part-nr. 42243000)
- 8: Inspection shaft (Spare part-nr. 66791000)
- 9: Filling valve (Spare part-nr. 37095000)
- 9.1: Lever (Spare part-nr. 43734000)
- 9.1.1: Seal (Spare part-nr. 4377000M)
- 9.2: Valve head (Spare part-nr. 43536000)
- 9.3: Membrane (Spare part-nr. 4375800M)
- 9.4: Screw cap (Spare part-nr. 43735000)
- 9.5: Valve FLOAT, 5 pcs. (Spare part-nr. 4379100M)
- 9.6: Set of seals (Spare part-nr. 43722000)*
- 10: Support device (Spare part-nr. 42246000)
- 11: Tube (Spare part-nr. 42233000)
- 11.1: Sealing washer (Spare part-nr. 0319100M)
- 12: Angle valve (Spare part-nr. 42235000)
- 13: water supply (Spare part-nr. 42234000)
- 14: AV1 complete with pipe extension (Spare part-nr. 42320000)
- 14.1: extension for Overflow pipe (Spare part-nr. 42313000)
- 14.2: Pneumatic hose (Spare part-nr. 42319000)
- 14.3: Seal (Spare part-nr. 42310000)
- 15: Valve seat for GD2 (Spare part-nr. 42315000)
- 16: Wall brackets (Spare part-nr. 3855800M)
- 17: Retro-fit set (Spare part-nr. 38796000)*

* Optional accessories