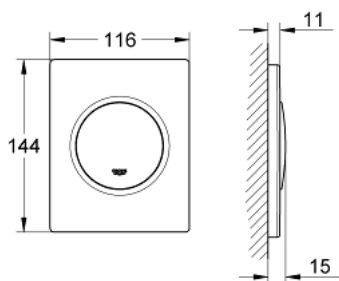


## 38 804 000 **NOVA COSMOPOLITAN ACTUATION PLATE**

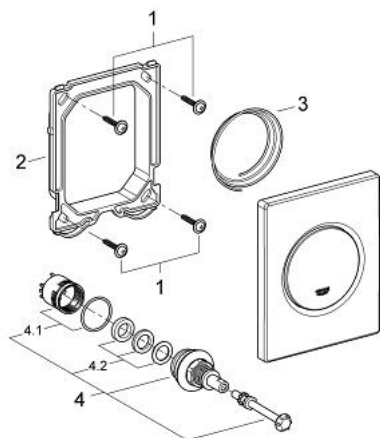


### PRODUCT DESCRIPTION

- Colour: chrome
- manual activation for urinal
- set for final installation
- for Rapido U or Rapido UMB
- 116 x 144 mm
- mechanical functional cartridge
- flow pressure min 0.5 bar
- operating pressure max 6 bar
- 1.0 - 6.0 l adjustable
- low noise (group II according to German noise specification)
- GROHE Long-Life finish



## 38 804 000 NOVA COSMOPOLITAN ACTUATION PLATE



**SPARE PARTS**, August 2012 – spareParts.validDate.now

1: Screw (Order-nr. 6636200M)

2: Mounting frame (Order-nr. 66845000)

3: Spring, 5 pcs. (Order-nr. 4309700M)

4: Cartridge (Order-nr. 42354000)

4.1: Seal kit (Order-nr. 4271500M)

4.2: Rings (Order-nr. 4282000M)