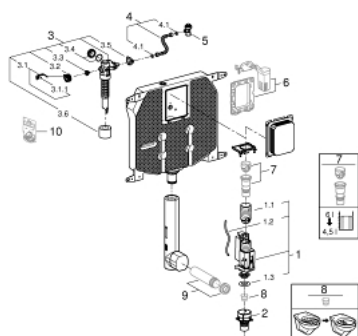


38 863 000 FLUSHING CISTERN FOR WC 80 MM

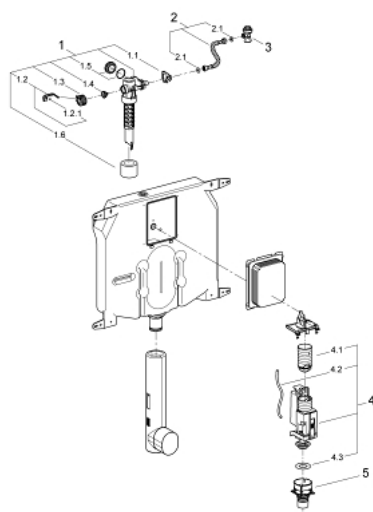


SPARE PARTS, May 2021 – now

- 1: Dual Flush discharge valve AV1 (Spare part-nr. 42320000)
- 1.1: extension for Overflow pipe (Spare part-nr. 42313000)
- 1.2: Pneumatic hose (Spare part-nr. 42319000)
- 1.3: Seal (Spare part-nr. 42310000)
- 2: Valve seat for GD2 (Spare part-nr. 42315000)
- 3: Filling valve (Spare part-nr. 43991000)
- 3.1: Valve Support (Spare part-nr. 43995000)
- 3.2: Lever (Spare part-nr. 43734000)
- 3.2.1: Seal (Spare part-nr. 4377000M)
- 3.3: Valve head (Spare part-nr. 43536000)
- 3.4: Membrane (Spare part-nr. 4375800M)
- 3.5: Screw cap (Spare part-nr. 43735000)
- 3.6: Valve FLOAT, 5 pcs. (Spare part-nr. 4379100M)
- 4: Tube (Spare part-nr. 42233000)
- 4.1: Sealing washer (Spare part-nr. 0319100M)
- 5: Angle valve (Spare part-nr. 42343000)
- 6: Retro-fit set (Spare part-nr. 38796000)*
- 7: 4.5 l adapter for GD2 (Spare part-nr. 42333000)*
- 8: Flow restrictor (Spare part-nr. 42300000)*
- 9: WC inlet and outlet connecting set (Spare part-nr. 37311K00)*
- 10: Set of seals (Spare part-nr. 43722000)*

* Optional accessories

38 863 000 FLUSHING CISTERN FOR WC 80 MM



SPARE PARTS, January 2006 – May 2021

- 1: Filling valve (Spare part-nr. 43991000)
- 1.1: Valve Support (Spare part-nr. 43995000)
- 1.2: Lever (Spare part-nr. 43734000)
- 1.2.1: Seal (Spare part-nr. 4377000M)
- 1.3: Valve head (Spare part-nr. 43536000)
- 1.4: Membrane (Spare part-nr. 4375800M)
- 1.5: Screw cap (Spare part-nr. 43735000)
- 1.6: Valve FLOAT, 5 pcs. (Spare part-nr. 4379100M)
- 2: Tube (Spare part-nr. 42233000)
- 2.1: Sealing washer (Spare part-nr. 0319100M)
- 3: Angle valve (Spare part-nr. 42343000)
- 4: AV1 complete with pipe extension (Spare part-nr. 42320000)
- 4.1: extension for Overflow pipe (Spare part-nr. 42313000)
- 4.2: Pneumatic hose (Spare part-nr. 42319000)
- 4.3: Seal (Spare part-nr. 42310000)
- 5: Valve seat (Spare part-nr. 42316000)