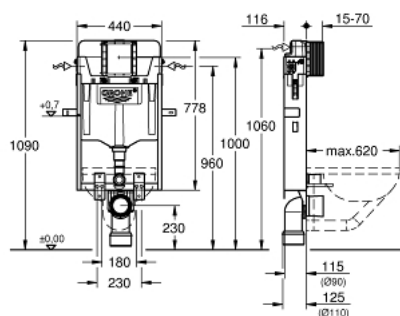


## A white GROHE water dispenser with a stainless steel frame and red push buttons. The dispenser has a large white tank with the GROHE logo and a set of six icons (three hot water icons and three cold water icons) on the top. The frame is made of stainless steel and has two red push buttons on the front. The dispenser is mounted on a black base.

- with flushing cistern GD 2, 6 - 9 l
- 778 x 440 x 116 mm
- for single installation
- 2 WC fixing bolts
- distance of fixing bolts 180/230 mm
- fixing device for ceramic
- outlet bend Ø 90 mm
- reducer Ø 90/110 mm
- inlet and outlet connecting set
- flushing cistern GD 2, 6 - 9 l, containing following features:
  - adjustment ex factory 6 l and 3 l
  - pneumatic discharge valve offering 3 modes of operation: dual flush or start/stop or single flush
  - water supply from left/right/back or top
  - low noise (group I acc. to German Noise Specification)
  - cistern insulated against condensation
  - ½" angle valve with push fit flexible hose union
  - no tools required for the installation of the inspection shaft incl. protection during construction phase
  - for vertical or horizontal use
- preparation for shower toilets with additional accessory 40 899 000 (sold separately)
- for mounting of small flush plates please order revision shaft 40 911 000 (sold separately)



## 39 165 000 UNISET ELEMENT FOR WC



### SPARE PARTS, September 2014 – spareParts.validDate.now

- 1: Threaded bolt (Order-nr. 4276400M)
- 2: WC inlet and outlet connecting set (Order-nr. 37311K00)
- 2.1: Basin fastening (Order-nr. 43511SH0)
- 2.2: Connector (Order-nr. 37119000)
- 3: Reducer (Order-nr. 42242000)
- 4: PP-outlet bend Ø 90 mm (Order-nr. 42327000)
- 5: Support for outlet bend (Order-nr. 42243000)
- 6: Inspection shaft (Order-nr. 66783000)
- 7: Filling valve (Order-nr. 37095000)
- 7.1: Lever (Order-nr. 43734000)
- 7.1.1: Seal (Order-nr. 4377000M)
- 7.2: Valve head (Order-nr. 43536000)
- 7.3: Membrane (Order-nr. 4375800M)
- 7.4: Screw cap (Order-nr. 43735000)
- 7.5: Valve FLOAT, 5 pcs. (Order-nr. 4379100M)
- 7.6: Set of seals (Order-nr. 43722000)\*
- 8: Support device (Order-nr. 42246000)
- 9: Tube (Order-nr. 42397000)
- 9.1: Sealing washer (Order-nr. 0319100M)
- 10: Angle valve (Order-nr. 42343000)
- 11: Dual Flush discharge valve AV1 (Order-nr. 42320000)
- 11.1: extension for Overflow pipe (Order-nr. 42313000)
- 11.2: Pneumatic hose (Order-nr. 42319000)
- 11.3: Seal (Order-nr. 42310000)
- 12: Valve seat for GD2 (Order-nr. 42315000)
- 13: 4.5 l adapter for GD2 (Order-nr. 42333000)\*
- 14: Retro-fit set (Order-nr. 38796000)\*
- 15: Retrofit kit for shower toilets Sensia Arena and IGS (Order-nr. 40899000)\*

\* Optional accessories